

ANY 2023 / 2024

# NETWORK OF COMPANIES

Parc de Recerca  
UAB

# LListat empreses

2023 / 2024

## Information and communications technology

[PÀG 04 / 07](#)

1. ALL READ
2. Aslogic
3. Oilimanjaro \*
4. Cognicor Technologies
5. D+T Microelectrónica A.I.E.
6. Davantis \*
7. Orain Technologies
8. FreshAi \*
9. Baretek
10. Icar Vision Systems
11. Deep Detection
12. BDcare
13. Mass Factory
14. Vintra
15. AIQUOS

## Health and biotechnology

[PÀG 09 / 13](#)

15. BioEclasion
16. Paperdropdx \*

17. CIMAB Diagnostics
18. Clinisciencias \*
19. Nanoligent
20. Sweanty
21. Pragmatic Diagnostics \*
22. Aerofybers
24. ROKA Furadada \*
25. RheoDx
26. Ahead Therapeutics
27. Telomere Therapeutics
28. Invaio \*
29. Remab Therapeutics \*
30. InBrain
31. Labsinlove S.L
32. Disrupt Therapeutics

## Materials and Energy

[PÀG 15 / 18](#)

33. AC Marca \*
34. Afinitica \*
35. Futurechromes
36. GPNT Graphene Nanotech
37. Nanomol Technologies \*
38. Cuantum \*
39. Molecular Gate
40. Cooling Photonics
41. Energiot \*
42. Applied Nanoparticles
43. AEInnova
44. Distinkt
45. FlexiIC

46. Alibava Systems \*
47. Fuelium \*
48. YIBACUS \*

## Environment and Sustainability

[PÀG 20](#)

49. Aeris Tecnologies
50. Ctrl4Enviro \*
51. Tectum Garden \*
52. Inèdit

## Food and Animal Health

[PÀG 22 / 23](#)

53. Lucta \*
54. Ypsicon
55. Vetgenomics \*
56. Cosmos \*
57. Suez Spain \*
58. AWEC \*

## Social Sciences

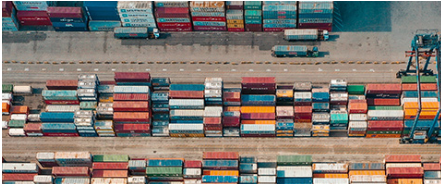
[PÀG 25](#)

59. Inari Global Social Action
60. IDETAN

\* Company located in the Edifici Eureka, at the UAB Research Park

# Information and communications technology

1 / 14

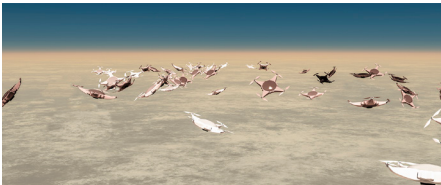


## All Read

EBT UAB

A **spin-off from the Centre de Visió per Computador** specialized in detecting text in images and digitalizing them. Their goal is to bring to the market their own technology based on deep learning, streamlining the identification and following of containers in ports and airports.

[www.allread.ai/es/](http://www.allread.ai/es/)

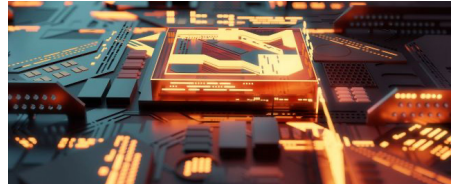


## Aslogic

EBT UAB

It is a **technology-based company by UAB**, created from the Logism research group of the UAB Unitat Departamental Logística i Aeronàutica. The company develops personalized products and services based on technologies that allow the optimization of each company's production processes.

[www.aslogic.es](http://www.aslogic.es)



## Qilimanjaro

UBTCADA

EBT / SPIN-OFF CAMPUS

A deep-tech **spin-off from the Institut de Física d'Altes Energies (IFAE), the Universitat de Barcelona (UB), and the Barcelona Supercomputing Center (BSC)** which addresses real-life quantum prepared problems. Both hardware and software are centered around a high-quality, quantum reaction qubit architecture to offer both quantum processors and servers.

[www.qilimanjaro.tech](http://www.qilimanjaro.tech)



## Cognicor Technologies

SPIN-OFF CSIC

It is a **spin-off from the Institut d'Investigació en Intel·ligència Artificial (IIIA) del CSIC** that has developed an online platform for conflict resolution between two parts via AI tools.

[www.cognicor.com/](http://www.cognicor.com/)



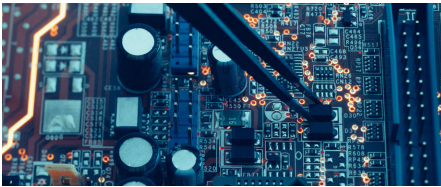
## Davantis

UBICADA

EBT / SPIN-OFF CAMPUS

A **spin-off from the UAB** that has developed one of the strongest video analysis platforms in the market, the main advantage of which resides in the ability to integrate with every video installation, new or existing, either with analog, IP, or thermal cameras.

[www.davantis.com/es](http://www.davantis.com/es)



## D+T Micro- electrónica A.I.E

UBICADA

SPIN-OFF CSIC

**Economic Interest Group** responsible for managing the operation of white room at the **Institut de Microelectrònica de Barcelona (IMB-CNM CSIC)**, which incorporates microelectronic technologies into industrial products, by designing and producing chips.



## Orain Technologies

EBT / SPIN-OFF CENTRES CAMPUS

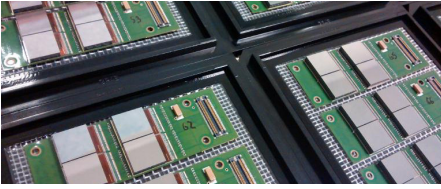
It is a **spin-off from the Centre de Visió per Computador (CVC)**, intending to give intelligence to machines, supplies, and passive equipment for better communication and interaction with people.



## FreshAi

UBICADA

Has developed a **platform that revolutionizes the experience of buying food from home**, combining the efficiency and speed of e-commerce with the traditional values and proximity of markets. The platform allows to select the fresh foods from the live picture at the stall.



## Baretek

[EBT / SPIN-OFF CAMPUS](#)

It is a **spin-off from the Institut de Física d'Altes Energies (IFAE) and the Institució Catalana de Recerca i Estudis Avançats (ICREA)** that offers microelectronic encapsulation services, as well as prototyping and small productions of particles and radiation pixelation detectors.

[www.baretek.eu.com](http://www.baretek.eu.com)

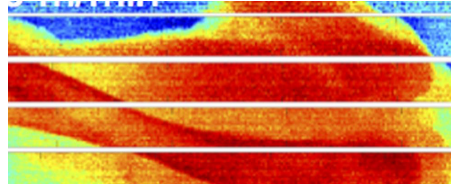


## Icar Vision Systems

[EBT / SPIN-OFF CAMPUS](#)

A **spin-off from the Centre de Visió per Computador (CVC)** that develops technology solutions for reading and interpreting personal documents via computer vision techniques.

[www.icarvision.com](http://www.icarvision.com)



## Deep Detection

[EBT / SPIN-OFF CAMPUS](#)

A **spin-off from the Institut de Física d'Altes Energies (IFAE)**. They are developing multispectral X-ray chambers for industrial inspections and material separation. Deep Detection technology offers simultaneous detection and characterization, as well as a real-time continuous inspection from the production lines to the recycling and security.

[www.deepdetection.tech/](http://www.deepdetection.tech/)

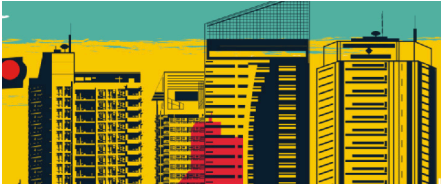


## BDcare

[EBT UAB](#)

It is an **EBT from the UAB** that develops Big Data services for companies and institutions. It is centered around the use and generation of knowledge in health-related environments, particularly in the rare diseases and animal welfare.

[www.bdcare.cat](http://www.bdcare.cat)



## MassFactory

[EBT UAB](#)

It is a **technology-based company from the GABIITAP group of the Escola d'Enginyeria de la UAB** that develops new phone apps for urban accessibility and people's mobility.

[massfactory.com/](http://massfactory.com/)



## Vintra

[EBT / SPIN-OFF CAMPUS](#)

It is a **spin-off from CVC** that offers video analysis solutions based on IA that transform a video from any source into secure, personalized actionable intelligence that allows their clients to create and maintain the world's most productive and secure organizations.

[www.vintra.io](http://www.vintra.io)



## AIQUOS

[SPIN-OFF CSIC](#)

A **spin-off from the CSIC's (IBM-CNM) Institut de Microelectrònica de Barcelona**, is a cutting-edge microelectronics company that provides electrochemical sensing microdispositives for aqueous media monitoring and total control. The technology is the only one that allows miniaturization dozens of (bio)chemical, electronic and neuromorphic intelligent sensors inside a single self-contained chip.

# Health and biotechnology

15 / 32





## AC Marca

UBICADA

International group based at **Parc de Recerca UAB** that has ten subsidiaries, more than 800 workers, and a presence of their brands in over 50 countries. Their business areas range today from home care to personal care, adhesives, and pharmacy dermocosmetics.

[www.acmarca.com](http://www.acmarca.com)



## Paperdropdx

UBICADA

EBT / SPIN-OFF CAMPUS

It is a **spin-off from the 'Institut Català de Nanociència i Nanotecnologia (ICN2) adhered to the Parc de Recerca UAB**. Promoted by Prof. ICREA Arben Merkoçi, responsible for the ICN2's Grup de Nanobioelectrònica i Biosensors, and innovation expert Marc Gallegos, PhD. The company has developed a low-cost, easy-to-use dispositive to identify durg-induced lesions.

[paperdrop-diagnostics.com/](http://paperdrop-diagnostics.com/)

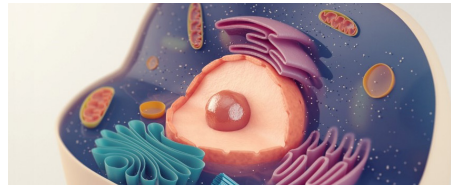


## CIMAB Diagnostics

SPIN-OFF UAB

It is a **spin-off from the UAB** that has the goal of offering personalized services focused on the clinical diagnosis of infertility via the most innovative technologies. Cimab offers its services to health professionals specializing in infertility, like assisted reproduction centers and sperm banks.

[www.cimab.es/](http://www.cimab.es/)

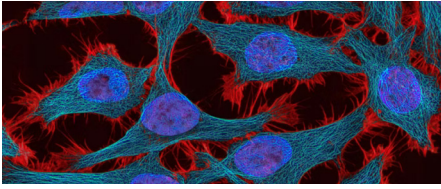


## Clinisciences

UBICADA

It is a **company specializing in the commercialization of reactivs** (antibodies, recombinables, ELISA kits, RNAi, ADNc clones, probes, PCR/qPCR reactivs, etc.) for research and diagnosis labs.

[www.clinisciences.com](http://www.clinisciences.com)



## Nanoligent

[EBT UAB](#)

A **technology-based company from the UAB**, created to develop nanomedicine for treating cancer via the selective elimination of tumoral cells. It is a system based on nanoparticles that transport a chemotherapeutic drug and release it into cancer cells.

[www.nanoligent.com](http://www.nanoligent.com)



## Sweanty

[SPIN-OFF CSIC](#)

This **spin-off from the Institut de Microelectrònica de Barcelona del CSIC (IMB-CNM)** is dedicated to the design, fabrication and distribution of products and technologies to analyze the composition of sweat and other biological fluids.

[www.sweanty.tech](http://www.sweanty.tech)



## Pragmatic Diagnostics

UBICADA

It is a **company based in the Edifici Eureka at the Parc de Recerca UAB** focused on the research and development of new products for in vitro diagnosis. The company offers consulting services and R&D labs to established companies, spin-offs, and start-ups to help introduce new products to the in vitro fertilization market.

[pragmaticdiagnostics.com](http://pragmaticdiagnostics.com)



## Nano1Health

UBICADA

It is a **company based at the Edifici Eureka from the Parc de Recerca UAB** that develops scalable solutions in bioinformatics and sequencing technology and innovative strategies to identify microorganisms and resistances to antimicrobes from a OneHealth point of view.

[www.nano1health.com/](http://www.nano1health.com/)



## Aerofibers

SPIN-OFF CSIC

**Solution in the form of biodegradable and biocompatible cellulose aerogels** that allow the incorporation of bioactive components as antioxidants to expand the service life of packaged foods and medicines for a controlled release via dermal patch.



## ROKA Furadada

UBICADA

It is a **company located at the Edifici Eureka from the Parc de Recerca UAB** that has developed and patented new SMART UV solar filters that act depending on the UV radiation dose. The new filters have been incorporated into a new generation of solar products with on-demand protection.

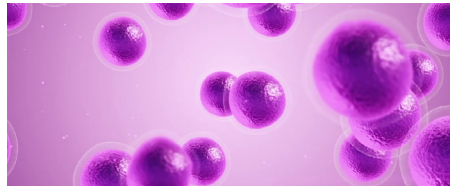
[www.rokafuradada.com](http://www.rokafuradada.com)



## RheoDx

EBT / SPIN-OFF CAMPUS

**A technology-based company from the Centre de Recerca Matemàtica (CRM).** RheoDx is a precise and portable in vitro device that immediately diagnoses hemetological diseases with a single drop of blood.



## Ahead Therapeutics

EBT / SPIN-OFF CAMPUS

**A technology-based company from the Institut Català de Nanociència i Nanotecnologia (ICN2)** and adhered to the PRUAB. It encapsulates drugs for autoimmune disease therapy.

[www.aheadtherapeutics.com](http://www.aheadtherapeutics.com)



# Telomere Therapeutics

EBT UAB

A spin-off from the **Centre Nacional d'Investigacions Oncològiques (CNIO)** and the **Universitat Autònoma de Barcelona (UAB)** to develop a new telomerase genic therapy for the treatment of lung fibrosis.



# Invaio

UBICADA

Company that is working for **agriculture that positively impacts nature**. It resolves challenges in performance and delivery in plant healthcare that allow agricultors to use healthier, more effective solutions to take care of all kinds of crops. It is an answer to consumer demands, giving key benefits to farmers and the environment.

[www.invaio.com](http://www.invaio.com)



# Remab Therapeutics

UBICADA

It is a **biotech company developing new treatments for antibody-generated diseases and disfunctions**; their platform allows to eliminate antibodies to give therapeutic solutions in infectious or autoimmune diseases, allergies and other fields where antibodies can affect.

[www.remabtx.com](http://www.remabtx.com)

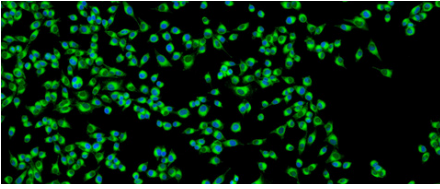


# InBrain

EBT / SPIN-OFF CAMPUS

A **spin-off company from the Institut Català de Nanociència i Nanotecnologia (ICN2)** and the **Institut de Microelectrònica de Barcelona del CSIC (IMB-CNM CSIC)**, in charge of creating graphene-based neuroelectronic interfaces to cure brain disorders.

[www.inbrain-neuroelectronics.com/](http://www.inbrain-neuroelectronics.com/)



## Labsinlove S.L

SPIN-OFF CSIC

A **spin-off from the Institut de Ciència de Materials de Barcelona (ICMAB) del CSIC and the Universidad de Granada**. Labsinlove S.L. develops new compounds rich in boron for their application as drugs for Boron Neutron Capture Therapy (BNCT), a promising radiotherapy for cancer, more selective that has fewer secondary effects than traditional radiotherapy.

[www.labsinlove.com](http://www.labsinlove.com)



## Disrupt Therapeutics

SPIN-OFF UAB

A **spin-off of the UAB** that was born to offer a technological solution to the pharmaceutical market for the creation of drugs that mitigate the secondary effects of medicinal cannabis on chronic pain and help fight cannabis addiction.

# Materials and Energy

33 / 48



## AC Marca

UBICADA

International group based at **Parc de Recerca UAB** that has ten subsidiaries, more than 800 workers, and a presence of their brands in over 50 countries. Their business areas range today from home care to personal care, adhesives, and pharmacy dermocosmetics.

[www.acmarca.com](http://www.acmarca.com)

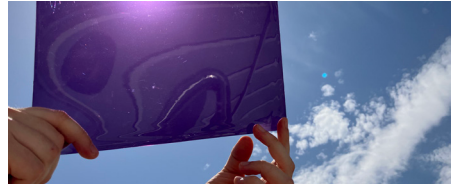


## Afinitica

UBICADA

**Company based at the Edifici Eureka from the UAB Research Park** that is focused on the design, development, and fabrication of instantaneous adhesive. Their center around innovation has allowed them to develop new, instantaneous, high-quality, easy-to-use adhesives with never seen properties that are now bringing to the market.

[www2.afinitica.com/afinitica/](http://www2.afinitica.com/afinitica/)

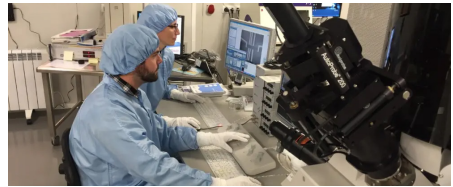


## Futurechromes

[EBT / SPIN-OFF CAMPUS](#)

It is a **spin-off from the Institut Català de Nanociència i Nanotecnologia (ICN2) and the CSIC** that has developed a photochromic system that changes colors in less than a second. It has multiple uses: optical, automobiles, etc.

[www.futurechromes.com](http://www.futurechromes.com)



## GPNT Graphene Nanotech

[SPIN-OFF CSIC](#)

It is a **spin-off of the Institut de Microelectrònica de Barcelona from the CSIC (IMB-CNM CSIC)** focused on the industrial production of epitaxial graphene for its posterior incorporation into semiconductors that help improve the existing technology.

[www.gpnt.es/](http://www.gpnt.es/)



## Nanomol Technologies

UBICADA

[SPIN-OFF CSIC](#)

It is a **spin-off from the Institut de Ciència de Materials de Barcelona (ICMAB) at the CSIC**. It offers R&D&I services and advanced technology to generate new nanomedicines and drug administration solutions that allow for better therapeutic efficacy and the comfort of the patient during their treatment.

[www.nanomol-tech.com/](http://www.nanomol-tech.com/)

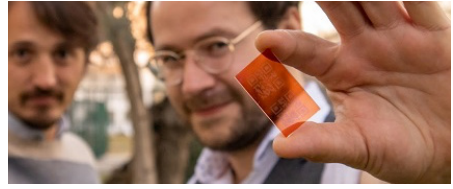


## Quantum

UBICADA

It is a company **located at the Edifici Eureka from the Parc de Recerca UAB** dedicated to the fabrication and commercialization of high-quality cyanoacrylate adhesives to use in the health, veterinary, and cosmetic fields. It offers simple, quick, and efficient solutions that help with the suture and closure of wounds and skin lacerations.

[www.cuquantum.me](http://www.cuquantum.me)



## Molecular Gate

[SPIN-OFF CSIC](#)

**Spin-off del ICMAB del CSIC** que utilitza nanotecnologia per impedir la falsificació de fàrmacs. La tecnologia consisteix a controlar la nanoestructura dels elements impresos a la superfície del producte, tenint en compte la seva orientació molecular i la composició dels materials. La idea és que l'element de seguretat estampat només es reveli quan s'observa amb un sistema de polarització senzill.



## Cooling Photonics

[EBT / SPIN-OFF CAMPUS](#)

A **technology-based company from the Institut Català de Nanociència i Nanotecnologia (ICN2)**. It is developing passive radiative cooling solutions, that reduce temperatures without energy consumption nor contamination, producing economic savings in cooling processes.

[www.coolingphotonics.com/](http://www.coolingphotonics.com/)





## Energjot



SPIN-OFF CSIC

It is a **spin-off from the Institut de Microelectrònica de Barcelona del CSIC (IMB-CNM CSIC)**. Born during the first edition of the Engega! program at the UAB Research Park, it has developed microgenerators that capture environmental energy.

[www.energjot.com](http://www.energjot.com)



## Applied Nanoparticles

SPIN-OFF UAB

A **spin-off from the ICN2 and the UAB** which has developed Biogàs+, a system based on using iron oxide nanoparticles as an additive that helps feeding the bacteria responsible of degrading organic matter in waste treatment plants.

[www.appliednanoparticles.eu/](http://www.appliednanoparticles.eu/)



## AEInnova

SPIN-OFF CSIC

It is a **spin-off from the UAB** that has a vocation focused on the research and innovation of products related to alternative energies, sensors, and the IoT. It has developed a technology that allows it to capture the residual heat of medium and low degrees and using it as energy.

[www.aeinnova.es/](http://www.aeinnova.es/)

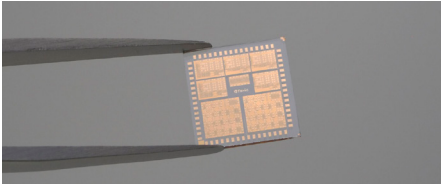


## Distinkt

EBT UAB

A **TBC from the UAB, l'ICN2 i el CSIC**, that commercializes a nanotechnology-based intelligent ink for anti-falsification uses. It offers a new generation of fluorescent, high-security inks. Their solution consists of a powder that contains both nano and micro-particles that change color or fluorescence when exposed to infrared light.

[www.distinkt.tech](http://www.distinkt.tech)



## FlexiiC

Offers **innovation in the electronic design of chips** (modeling of devices, design, and simulation of complex circuits) and their fabrication to boost a new market for organic electronics. As such, FlexiiC reduces the costs of materials and techniques of fabrication by substituting them for organics and additive fabrication techniques, resulting in a great reduction in spending on energy, machinery, and materials.

[flexiic.tech/es/](http://flexiic.tech/es/)



## Alibava Systems

[SPIN-OFF CSIC](#)

It is a **spin-off from CSIC, born at the Institut de Microelectrònica de Barcelona del CSIC (IMB-CNM CSIC)**. It develops and commercializes internationally a simple, complete electronic system, that measures radiation detectors precisely and simply.

[www.alibavasystems.com/](http://www.alibavasystems.com/)



## Fuelium

UBICADA

[SPIN-OFF CSIC](#)

It is a **spin-off from the Institut de Microelectrònica de Barcelona from the CSIC (IMB-CNM CSIC)** that develops an alternative to the traditional button cells, based on low-cost technology that does not produce toxic waste and is designed for small, single-use medical devices, like pregnancy tests.

[www.fuelium.tech/](http://www.fuelium.tech/)



## YIBACUS

UBICADA

Company **located at the Edifici Eureka from the Parc de Recerca UAB**, the main activity of which is the R&D of advanced materials as well as their fabrication and commercialization.

# Environment and Sustainability

49 / 52

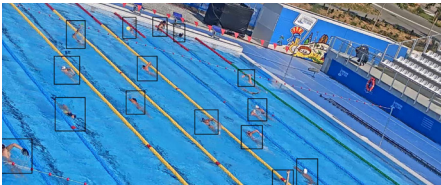


## Aeris Tecnologies

[SPIN-OFF UAB](#)

It is a **spin-off of the UAB**, created by GENOCOV Group experts. The company is focused on the design, build, and maintenance of bioreactors for water and residual gas treatment.

[www.aeristec.com/](http://www.aeristec.com/)



## Ctrl4Enviro

UBICADA

Company **located at the Edifici Eureka from the Parc de Recerca UAB**, it is centered around investigating solutions in control and monitoring systems for environmental processes. The company develops systems of water and air monitoring systems to improve their treatment and reduce the use of disinfectants, and designs image recognition systems with flux analysis.

[ctrl4enviro.com/](http://ctrl4enviro.com/)



## Tectum Garden

Born in the Sostenipra research group, from the **Institut de Ciència i Tecnologia Ambientals at the Universitat Autònoma de Barcelona**, they are specialists in urban agriculture and have many expertises to be able to give an interdisciplinary answer to the challenges that come to make cities more sustainable.

[www.tectumgarden.cat/](http://www.tectumgarden.cat/)



## Inèdit

[SPIN-OFF UAB](#)

Inèdit started its activity back in 2009; it is a **spin-off from the UAB** centered around investigation applied to sustainability and environmental prevention, that gives ecoinnovation and ecodesign to their clients.

[www.ineditnova.com](http://www.ineditnova.com)

# Food and Animal Welfare

53 / 58



## Lucta

UBICADA

Company **located at the Edifici Eureka of the Parc de Recerca UAB**, specialized in the design, fabrication and commercialization of aromas for human food, fragrances for home and additives for animal nutrition. To improve market efficiency and competitiveness, and with the goal of satisfying this need for innovation, the group has created a new Unitat d'Innovació d'Ingredients i Tecnologia.

[www.lucta.com/](http://www.lucta.com/)



## Ypsicon

EBT UAB

A **technology-based company from the UAB** focused on the design, fabrication, and commercialization of high-tech equipment for food processing, cosmetics, and medical products. It was born at the Centre Especial de Recerca Planta de Tecnologia dels Aliments of the UAB.

[www.ypsicon.com/](http://www.ypsicon.com/)



## Vetgenomics

UBICADA

EBT UAB

A technology-based company from the **UAB located at the Edifici Eureka of the Parc de Recerca UAB**, that specializes in veterinarian genetic diagnosis.

[www.vetgenomics.com/](http://www.vetgenomics.com/)



## Cosmos

UBICADA

Company **located at the Edifici Eureka of the Parc de Recerca UAB**, it is the main Spanish manufacturer of food aromas and has more than a century of experience in designing and preparing products.

[www.cosmosaromatica.com/](http://www.cosmosaromatica.com/)



## Suez Spain

UBICADA

Company **located at the Edifici Eureka of the Parc de Recerca UAB**, it offers innovative solutions to accompany clients in transitioning from a lineal model that overconsumes our resources to a circular economy that recycles and uses them properly. It contributes to the sustainable development of the communities where it is present.



## AWEC

UBICADA

EBT UAB

A **technology-based company from the UAB located at the Edifici Eureka of the Parc de Recerca UAB** that transfers knowledge about animal welfare to the farming and pet sectors, to the biotechnology industry and zoologic institutions.

[www.awec.es/](http://www.awec.es/)

# Social Sciences

59 / 60



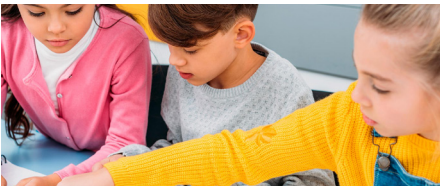


# Inari Global Social Action

[EBT UAB](#)

A **technology-based company from the UAB**, it was born at the AFIN research group. It offers support and guidance services, specialized training for professionals, and advice for the human reproduction field, which encompasses themes such as families, infants, sex/gender, sexual and reproductive health, the reproductive cycle, the body, and disease.

inari.cat



# IDETAN

[EBT UAB](#)

A **technology-based company from the UAB**, it has the goal of developing and applying advanced therapies for impulsivity and learning disorders by offering screening and diagnosis services to different collectives. IDETAN wants to address neuro-psycho-development and learning disorders intrinsically in every field in which they manifest.

A photograph of a modern building facade, likely the Eureka building at the Parc de Recerca UAB. The building features a grid of glass windows and panels, with several windows having colorful inserts in shades of red, orange, and blue. The sky is a clear, pale blue. The building's structure is made of light-colored metal frames.

**Parc de Recerca UAB**

Av. de Can Domènech · Edifici Eureka

Campus de la UAB

08193 Bellaterra (Cerdanyola del Vallès)

Barcelona · Spain

T +34 93 586 88 91 / F +34 93 581 28 41

[parc.recerca@uab.cat](mailto:parc.recerca@uab.cat)

**Parc de Recerca  
UAB**